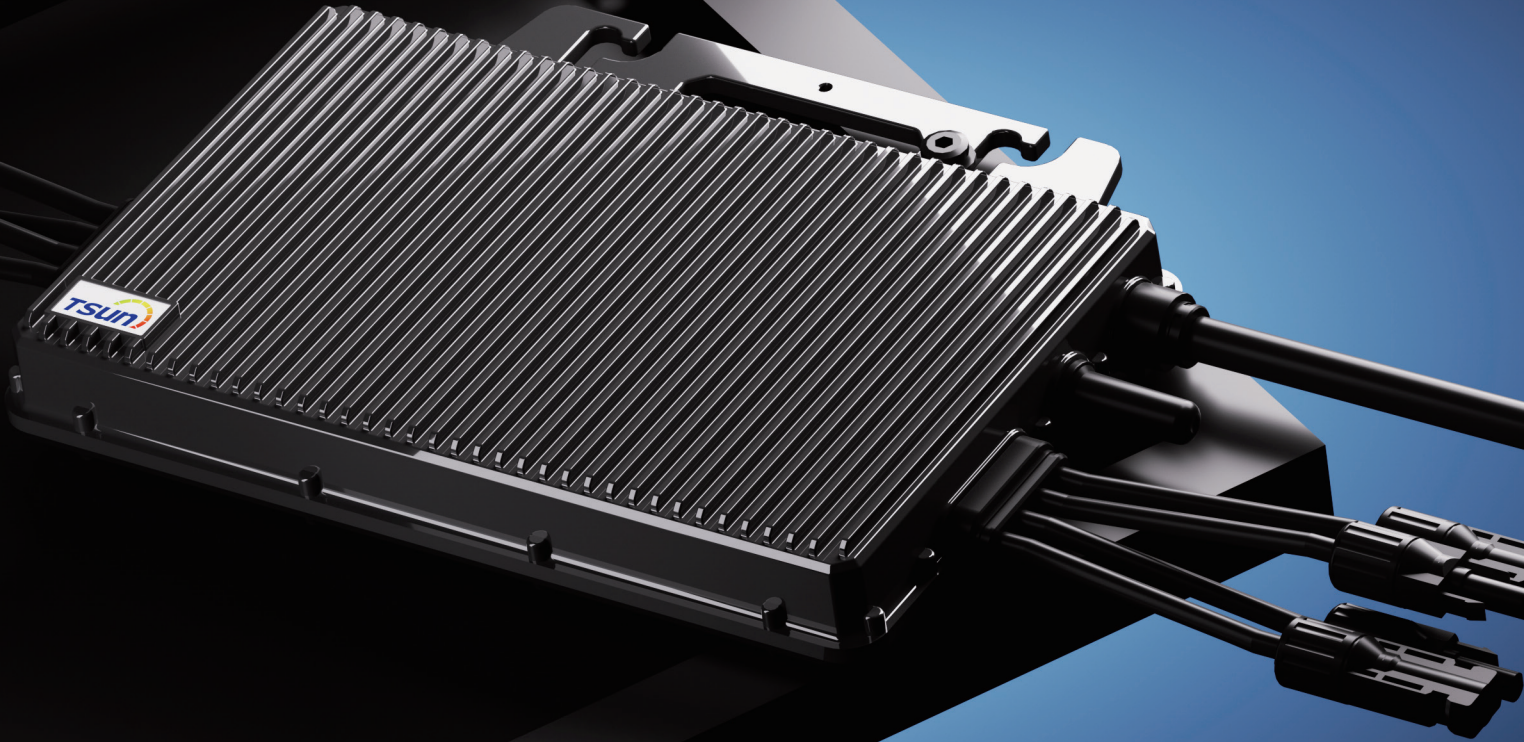


# TSUN Balcony Microinverter

TSOL-MS2000



## Maximized Efficiency

Individual optimization, se-parate dedicated MPPT for each panel.

New topology design, max. efficiency up to 96.7%.

## Flexibility

Suitable for TSOL-ESK series AC module solution.

Plug & play installation, Easy to install.

## Safety

Max. DC voltage 60V. No threat for high DC voltage.

Integrated LoM protection function. Ensure the safety of power grid.

## Reliability

Die casting design and glue filling technology. Better thermal dissipation.

Standard 12 years warranty, Quality guaranteed.

CE VDE 0126 VDE 4105 EN 50549 RD 1699 G 98

**TSUNESS Co., Ltd**

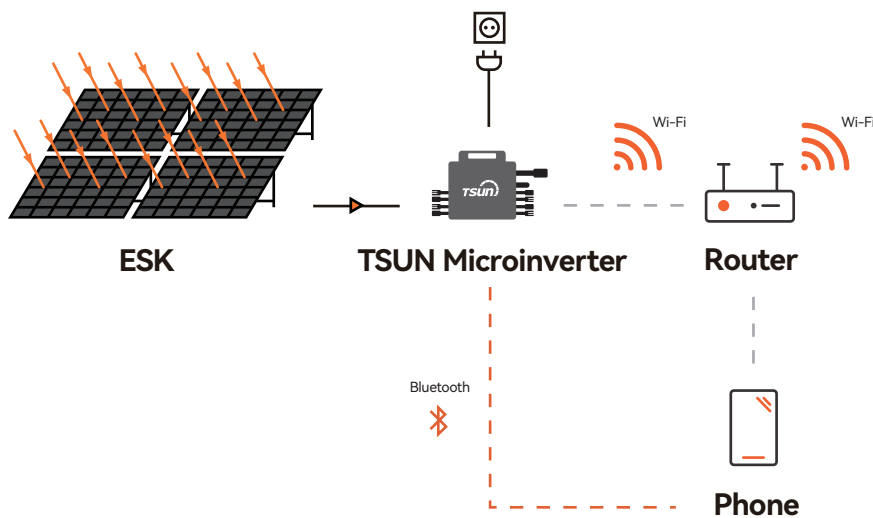
sales@tsun-ess.com www.tsun-ess.com +86-512-66186028

# Technical Data

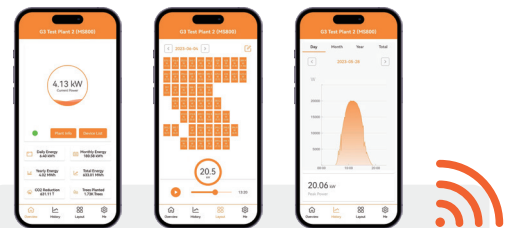
Model		TSOL-MS2000
<b>Input(DC)</b>		
Recommended Module Power [W]		300-550
Start up Voltage [V]		22
MPPT Voltage Range [V]		16-60
Max. Input Voltage [V]		60
Max. Input Current [A]		4 * 16
Max. Input Short-circuit Current[A]		4 * 25
<b>Output [AC]</b>		
Max. Continuous Output Power [VA] <sup>1)</sup>		2000
Max. Output Current [A]		10
Nominal Output Voltage [V] <sup>2)</sup>		230, L/N/PE
Nominal Frequency [Hz] <sup>2)</sup>		50
Power Factor		>0.99 default
<b>Efficiency</b>		
Peak Inverter Efficiency		96.7%
Nominal MPPT Efficiency		99.9%
Night Time Power Consumption [mW]		< 50
<b>General Data</b>		
Dimensions [WxHxD mm]		331 * 218 * 40
Weight [kg]		5
Operating Ambient Temperature Range [°C] <sup>3)</sup>		-40 °C to 65°C
Cooling		Natural Convection
Type of isolation		Galvanically Isolated HF Transformer
Type of Enclosure		IP67
DC Connector Type		QC4 (Stäubli MC4 Optional)
Compliance		CE-RED, EN 50549-1: 2019, VDE-AR-N 4105: 2018, CEI 0-21: 2022 , TOR , Synergrid
<b>Power Cord (Optional)</b>		
Wire Size		1.5mm <sup>2</sup>
Cable Length <sup>4)</sup>		5m / 10m / 20m
Plug Type <sup>4)</sup>		Schuko
<b>Monitoring</b>		
Communication		Built-in WiFi module
Energy Management		Talent Home App / TSUN Smart App

1) The output power of microinverter can be limited to 300W / 600W according to the local regulations.  
 2) The AC voltage and frequency range may vary depending on specific country grid.  
 3) The microinverter may derate under poor ventilation and heat dissipation installation environment.  
 4) The length and plug type can be customized.

## Diagram



## Monitoring Platform



Talent Home is an **Energy Monitoring Mobile Application Software**. Users can use Talent Home to monitor the real-time operation of the entire pv power generation system.

**Monitor Generation Data of Solar Plant**

**One-button to Connect Network**

**Power Generation Statistics**

**Module-level Monitoring System**

**Fast Network Configuration**